

CyberLink



CyberLink PowerDirector 365

Create, Edit, Share – Video editing, made for everyone.

PRODUCT PRESENTATION





PROFESSIONAL GRADE VIDEO EDITING

2



Tell your story the way you imagined with the fastest video editor designed for all creators. Create cinema quality edits with industry-leading smart AI tools, easy-to-apply effects, and a massive royalty-free stock video and image library.



BENEFITS OF 365 SUBSCRIPTION

3



LUT Color Presets

Take creative control of your content and add a splash of color to your videos with LUT color presets.



Premium Stock Content

Access a collection of videos and images powered by iStock by Getty Images.



Design Packs

Unlock a vast collection of titles, transitions, and presets to fulfill your creative vision; new packs added monthly!



Expansive Audio Library

Create the perfect soundtrack with access to a vast collection of background music and sound effects; with more added every month.



Cinema-style Visual Effects

Expand your effects collection with striking transitions and particle effects.



Free Auto-Upgrade

Always stay up to date with the newest tools and features.



Priority Customer Support

Get your questions answered first with priority in-app customer support exclusive to 365 users.



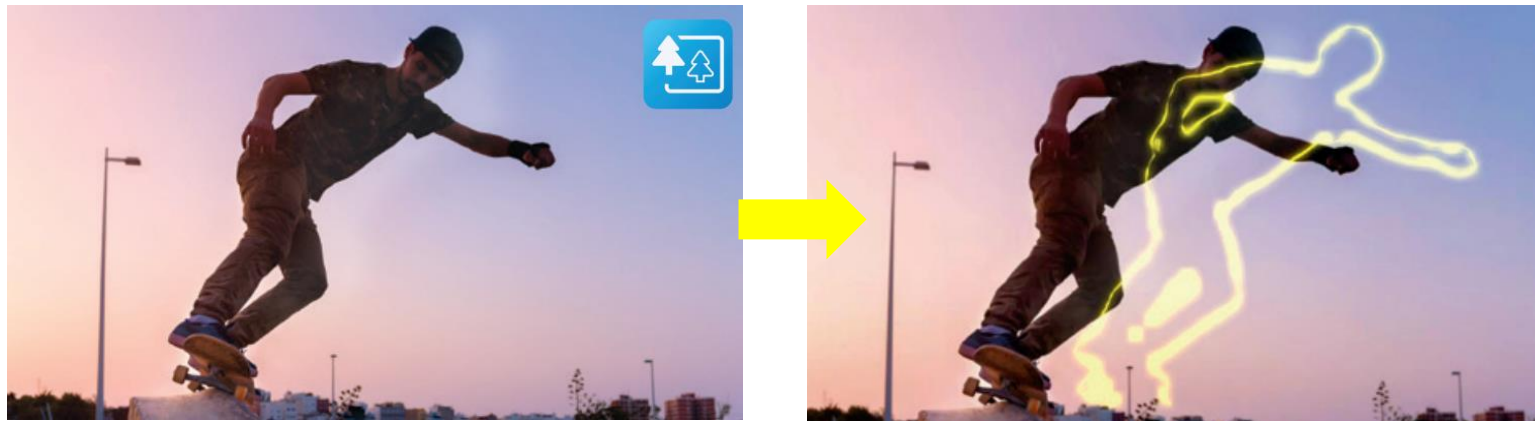
CyberLink PowerDirector 365

FEATURE INTRODUCTION





AI OBJECT DETECTION WITH VIDEO EFFECTS



Automatically apply masks around people or objects to remove backgrounds, unwanted objects, or add effects.



AI SKY REPLACEMENT

6

Enhance or totally replace the sky for perfect scenic shots.
Select from a range of presets or import custom images.





AI AUDIO ENHANCEMENTS

7



AI Wind Removal

Remove gusts of wind for crisp, clear, distraction-free audio.



AI Speech Enhancement

Reduce unwanted background noise for refined, high-quality vocal tracks.



GREEN SCREEN EDITING

8

Create Hollywood-style green screen effects with an improved chroma key engine and multi-key color sampling.





MASK & BLEND

9



Layer, shape, and blend like never before
with enhanced keyframe controls.



MILLIONS OF ROYALTY-FREE STOCK

10

Expand your creative horizons with unlimited access to our premium stock media library. You'll have all the content you need to create your masterpiece.



CyberLink
PowerDirector 365

CyberLink



CUSTOMIZABLE TITLES

11

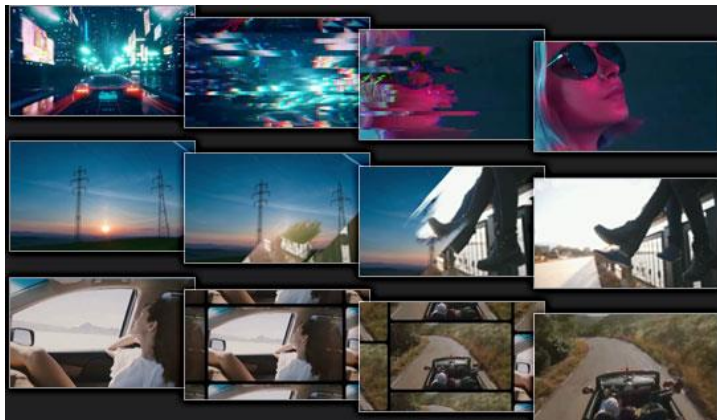
Customize your titles with unique animated templates and titles/PIPs with SFX.





REDEFINE YOUR VIDEOS

12



Transitions

Choose from a variety of styles to seamlessly connect your shots.



Visual Effects

Transform the look of your video with mind bending special effects.



SHARE WITH THE WORLD

13

Screen Recording

Capture, edit, and share video demos and tutorials to become the next YouTube star.



Live Streaming

Stream directly to Twitch, YouTube, or other popular streaming platforms. Record with chroma key and add overlay objects.





PREMIUM CREATIVE DESIGN PACKS

14

Unlock a vast collection of titles, transitions, and presets to fulfill your creative vision.

NEW PACKS EVERY MONTH!

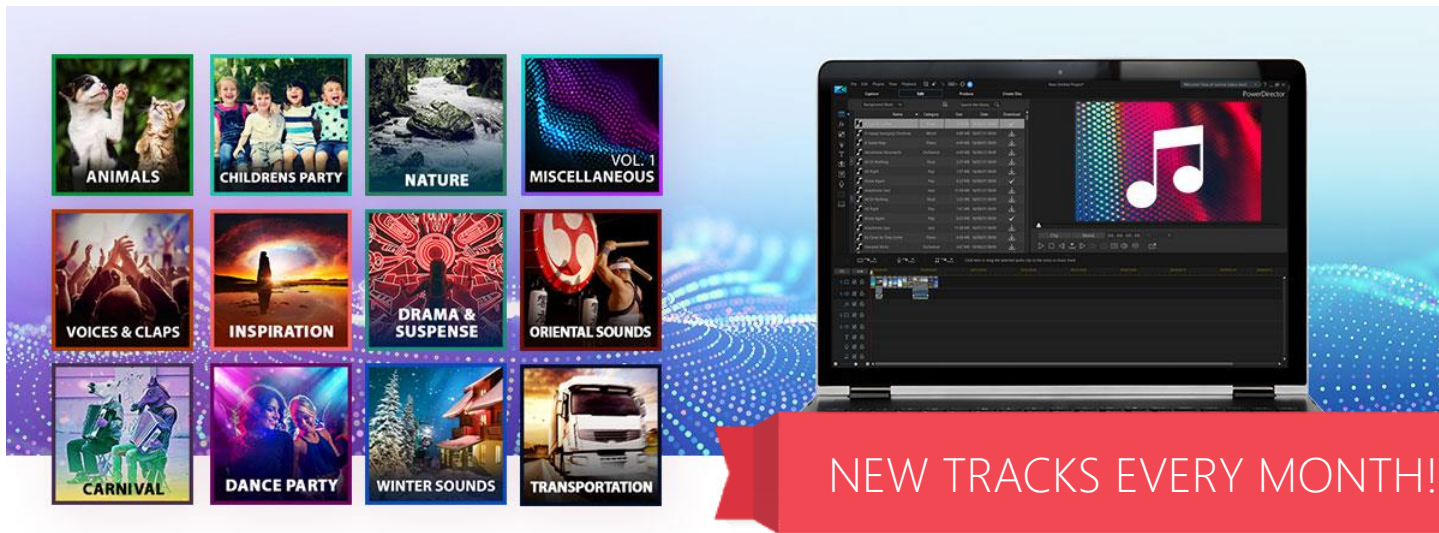




BACKGROUND MUSIC TRACKS & SOUND EFFECTS

15

Always find the perfect soundtrack for your videos from our ever-growing library of 170+ background music tracks and 580+ sound effect clips.



CyberLink



CyberLink
PowerDirector 365





MINIMUM SYSTEM REQUIREMENTS

17

Operating System

Microsoft Windows 11, 10, 8/8.1, 7 (64 bit OS only)

*Windows 11 or 10 required for AI tools and features

Processor (CPU)

Intel

Intel Core™ i-series and above.

Haswell (4th generation) processor: Core i7-4770 (only Core and Xeon branded), and above required for AI features.

AMD

AMD Phenom® II and above.

AMD A8-7670K and above, AMD Ryzen™ 3 1200 and above required for AI features.

Graphics Processor (GPU)

Standard Video: 128 MB VGA VRAM or higher

360-video: DirectX 11 compatible

AI Plugin: 2GB VGA VRAM or higher

NVIDIA Audio/Video Denoise and Room Echo Removal: NVIDIA GeForce RTX 2060, NVIDIA Quadro RTX 3000, NVIDIA TITAN RTX, or higher.

Memory

4GB required (6GB or above recommended)

8GB or higher required for NVIDIA Audio/Video Denoise and Room Echo Removal

Hard Disk Space

7GB required

Burning Drive

Supported recordable drive is required for disc burning

Sound Card

Windows compatible sound card is required

Internet Connection

Internet connection also required for initial software & file formats activation and online services.

Screen Resolution

1024 x 768, 16-bit color or above



FORMAT SUPPORT

18

Video File Importing

- H.265/HEVC (8bit/10bit/10bit with HDR10 and HLG)
- MOD
- MVC (MTS)
- MOV (H.264/HEVC/alpha PNG/Apple ProRes 10bit 4:2:2)
- MPEG-1
- MPEG-2
- MPEG-4 AVC (H.264)
- FLV (H.264)
- MP4 (XAVC S, XAVC 8bit 4:2:0)
- AVCHD (M2T, MTS)
- DVR-MS
- DV-AVI
- VRO
- AVI
- WMV
- WMV-HD
- DAT
- WMV-HD
- WebM (VP9)
- MKV (multiple audio streams)
- TOD
- 3GPP2
- VOB
- Top-under Video
- Side-by-Side Video
- Dual-Stream AVI
- AVI
- WTV in H.264/MPEG2 (multiple video and audio streams)
- Dolby Digital audio*
- HDR (HEVC HDR10 & HLG)
- MXF (AVC 4:2:0)
- XAVC (4:2:0)
- MXR (8bit 4:2:0 H.264)
- ProRes 4:2:2
- V210 4:2:2

360° Video

Equirectangular format MP4 (H.264/265). Supports up to 4K resolution in 2:1 aspect ratio.

Audio Importing

File: WAV, MP3, WMA, M4A, OGG, FLAC, AAC, AMR-NB, Opus

Format: AAC, Dolby Digital*, Dolby Digital Plus*, WAVE, MPEG-1 Layer III, FLAC, ALAC

**Windows 8/8.1/10/11 OS is required.*

Video File Exporting (Production)

- High-Definition: AVCHD, AVCHD 2.0 (3D/ Progressive) MPEG-2 HD, WMV-HD
- 2K/4K resolution: H.264 AVC, WMV, H.265 HEVC, XAVC S
- MKV H.264 AVC/H.265 HEVC (.MKV) with LPCM/AAC Stereo/5.1 /Dolby Digital Stereo*
- MPEG-2 (.MPG) with LPCM /Dolby Digital Stereo*
- M2TS H.264 AVC/H.265 HEVC (.M2TS) with LPCM /Dolby Digital Stereo*
- MPEG-4 H.264 AVC/ H.265 HEVC (.MP4) with LPCM/AAC Stereo/5.1 /Dolby Digital Stereo*
- XAVC S (.MP4 with AAC Stereo/5.1 audio)
- Windows Media (.WMV)
- Windows AVI/DV-AVI (.AVI)
- AVCHD2.0 for SD/SDHC/SDXC/MS memory card or flash memory
- 3GPP2 for 3G mobile phones
- 3D Video: MVC, Side-by-Side, Anaglyph
- Image (Animated GIF/PNG, Image Sequence JPG/PNG)
- **360 Video:** Equirectangular format MP4 (H.264 AVC/H.265 HEVC)

Audio File Exporting (Production)

- AAC (.M4A), WMA, LPCM (.WAV)

Formats Supported for Disc Creation

- 3D Disc Burning: DVD/AVCHD/BD
- DVD
- BD Burning: BDMV
- AVCHD disc burning
- DVD & BD disc burning with LPCM 2ch



PRICING

19

PowerDirector 365 (Monthly Plan)	\$19.99
PowerDirector 365 (Annual Plan)	\$69.99



MEDIA CONTACTS

20

Corporate:

Katharina Boehm at press@cyberlink.com or by phone at: +886-2-8667-1298, ext. 2173

CyberLink Japan:

Hiroyuki Imazawa at contact_pr_jpn@cyberlink.com or by phone at: +81-3-5875-6650

CyberLink USA:

Mary Placido at contact_pr@cyberlink.com or by phone at +1 (415) 218-3627

Germany:

Stefan Winter at contact_pr_deu@cyberlink.com or by phone: +49-531-3873316

France:

Laëtitia D'Urso at contact_pr_fr@cyberlink.com or by phone: +33-(0)1 79 30 90 39

United Kingdom:

Katharina Boehm at press@cyberlink.com or by phone at: +886-2-8667-1298, ext. 2173